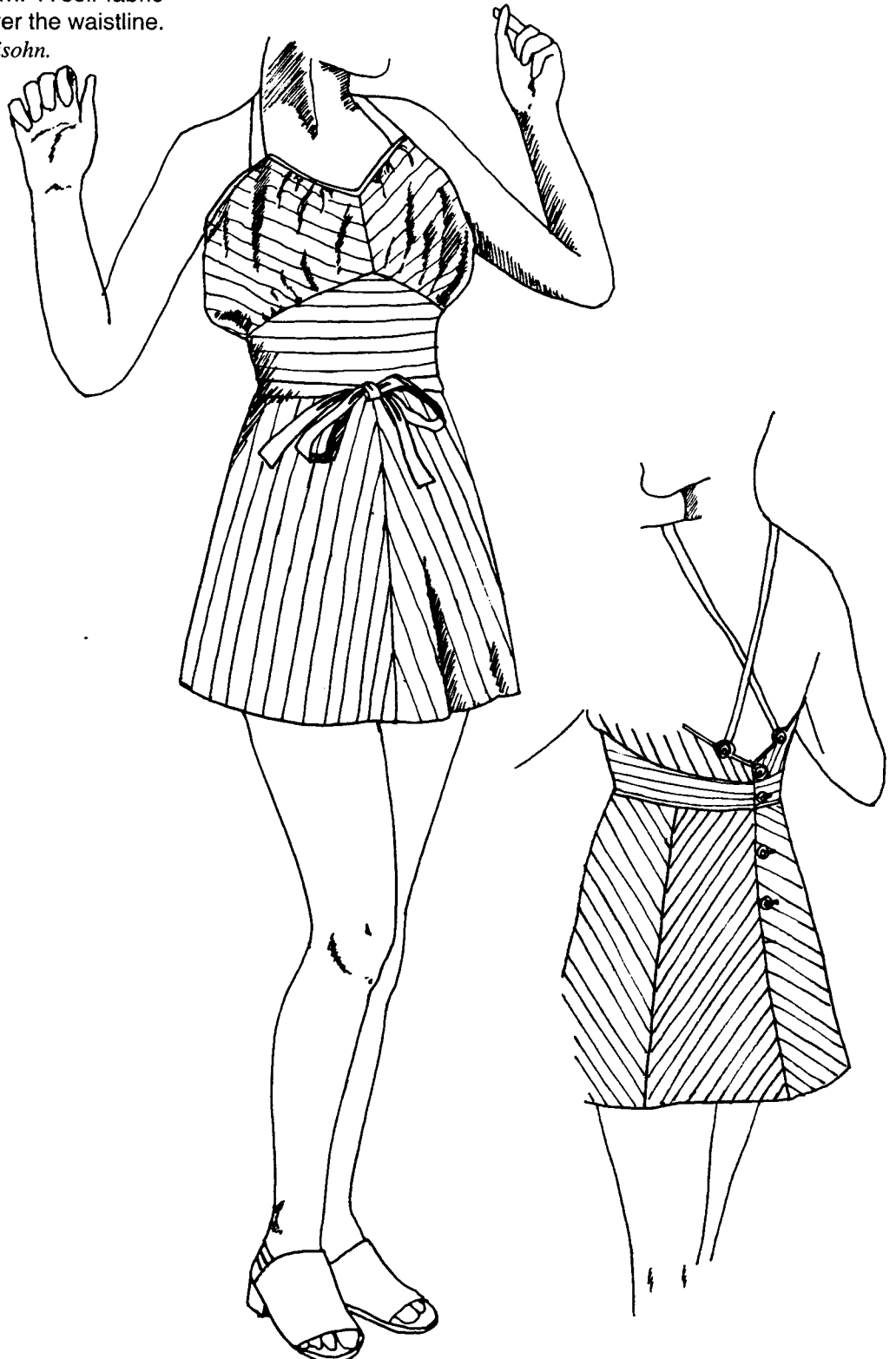
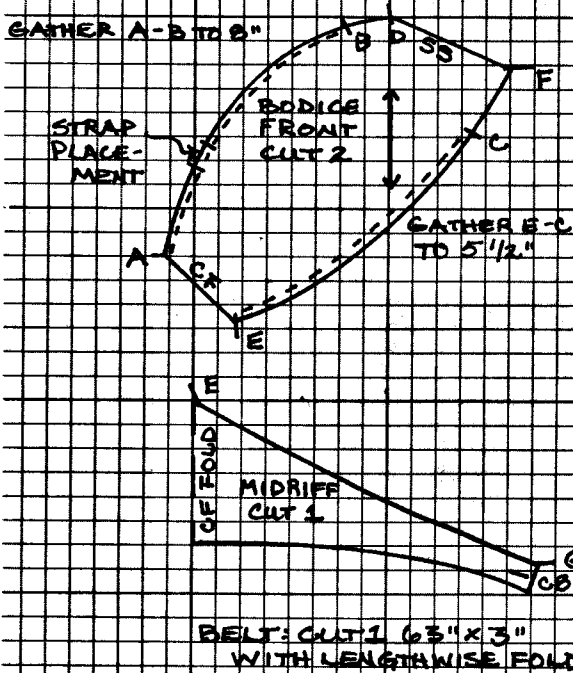


FIGURE 59. 1938. MULTI-COLORED COTTON PRINT BATHING SUIT. Worn by the donor, this one-piece suit is a size 34. The bias cut bodice gathers to fit the midriff. The eight gore skirt has a placket center back with two buttons; another button closes the midriff and one closes the bodice. The bodice is lined with jersey knit; the skirt is lined with jersey knit shorts cut from a 1920's bathing suit pattern. A self-fabric tie belt is worn over the waistline.

Donor: Irene Lewisohn.

CI.46.9.69.ab.

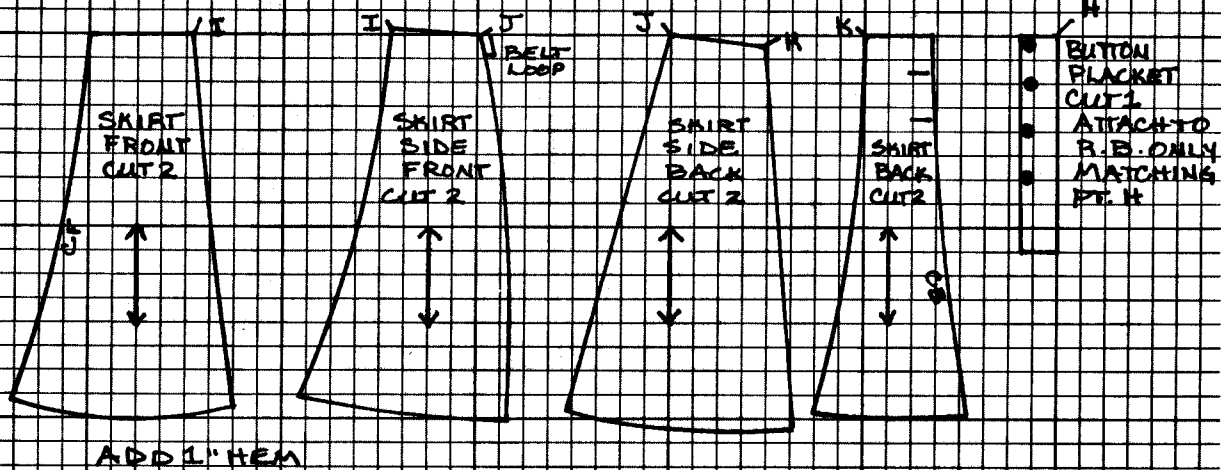




STRAPS: CUT 2 21" x 2 1/2" WITH LENGTHWISE FOLD ATTACH TO BODICE FRONT; BUTTON TO SELF THROUGH LOOP ON BACK.

PT. H IS ON B.B. ONLY

BODICE IS LINED WITH JERSEY KNIT CUT FROM SAME PATTERN. JERSEY KNIT UNDER SHORTS, CUT FROM A 1920S TRUNKS PATTERN, IS ATTACHED TO BODICE Lining AT WAISTLINE



WDL FROM SIZE 4-6